



# GAT MONTHLY MEMBERSHIP PROGRESS REPORT

Results as of: 2/29/2024

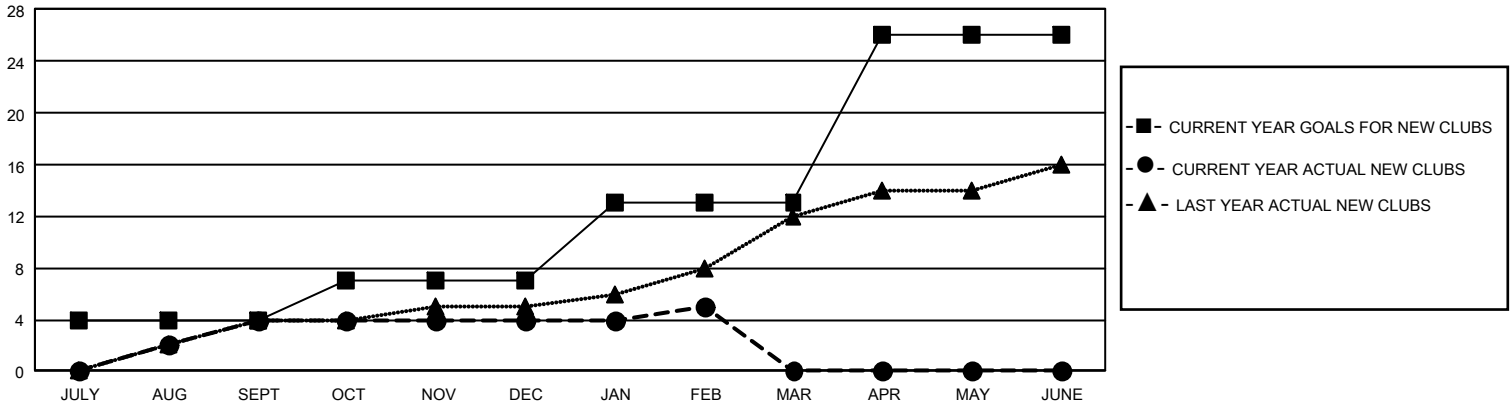
## GMT Constitutional Area 7, Group A

REPORT DOES NOT INCLUDE CLUBS IN UNDISTRICTED AREAS.

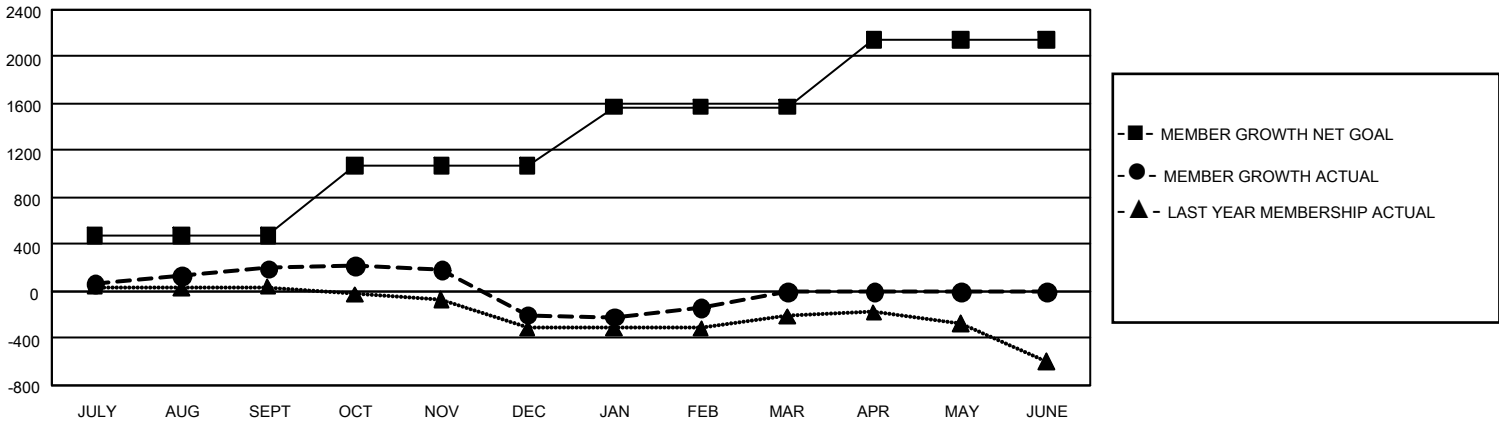
Clubs			
RESULTS FOR 2023-2024			
QUARTER	NEW CLUB GOAL	NEW CLUBS	DROPPED CLUBS
JULY/AUG/SEPT	12	4	10
OCT/NOV/DEC	9	0	2
JAN/FEB/MAR	18	1	2
APR/MAY/JUNE	39	0	0

Members			
RESULTS FOR 2023-2024			
QUARTER	MEMBER GROWTH NET GOAL	MEMBER GROWTH ACTUAL	DROPPED MEMBERS ACTUAL (including transfers)
JULY/AUG/SEPT	475	897	607
OCT/NOV/DEC	597	579	900
JAN/FEB/MAR	500	548	406
APR/MAY/JUNE	575	0	0

GOALS AND ACTUAL NEW CLUBS CUMULATIVE



GOALS AND ACTUAL MEMBERS CUMULATIVE



<b>DROPPED CLUBS: 14</b>	617 CLUBS OF 1,152 ADDED 1 OR MORE NEW MEMBERS	<b><u>GENDER DISTRIBUTION</u></b>	
		MALE 13,752 (61.59%) FEMALE 8,562 (38.34%) NON BINARY 5 (0.02%) PREFER NOT TO ANSWER 11 (0.05%)	
<b><u>DROPPED MEMBERS</u></b>		<a href="#">CLICK HERE FOR CUMULATIVE MEMBERSHIP DATA</a>	
DECEASED 215 CLUB CANCELLED 30 OTHER 1,668 <b>TOTAL 1,913</b>	TOTAL FAMILY UNIT MEMBERS 3,423 FAMILY MEMBERS PAYING HALF DUES 1,742		